

OPIS PRZYPADKU CASE REPORT

Paweł Rudziński
Piotr Wegrzyn
Karol Wierzbicki
Agnieszka Zdechlik
Janusz Konstanty-Kalandyk
Jacek Piątek
Jerzy Sadowski

Department of Cardiovascular Surgery
and Transplantology Jagiellonian University
John Paul II Hospital in Krakow

Key words:

needle
self-injury
right ventricle

Słowa kluczowe:

igła
samookaleczenie
prawa komora

Self-injury. A needle in the heart

Samouszkodzenie. Igła w sercu

Self injures and suicides are quite common at psychiatric patients. Injuries usually concerns limbs, chest or head. This time the presented injury was very inventive. The authors describe a case which is rather rare and unusual, concern a 26 years old patient who wanted to commit a suicide with a sewing needle.

Samookaleczenia i samobójstwa są całkiem częstym zjawiskiem u pacjentów psychiatrycznych. Okaleczenia zazwyczaj dotyczą kończyn, klatki piersiowej a także głowy. Tym razem prezentowane okaleczenie było bardzo pomysłowe. Autorzy opisują przypadek, który jest raczej rzadki i niezwykle. Dotyczy 26 letniej pacjentki, która chciała popełnić samobójstwo igłą krawiecką.

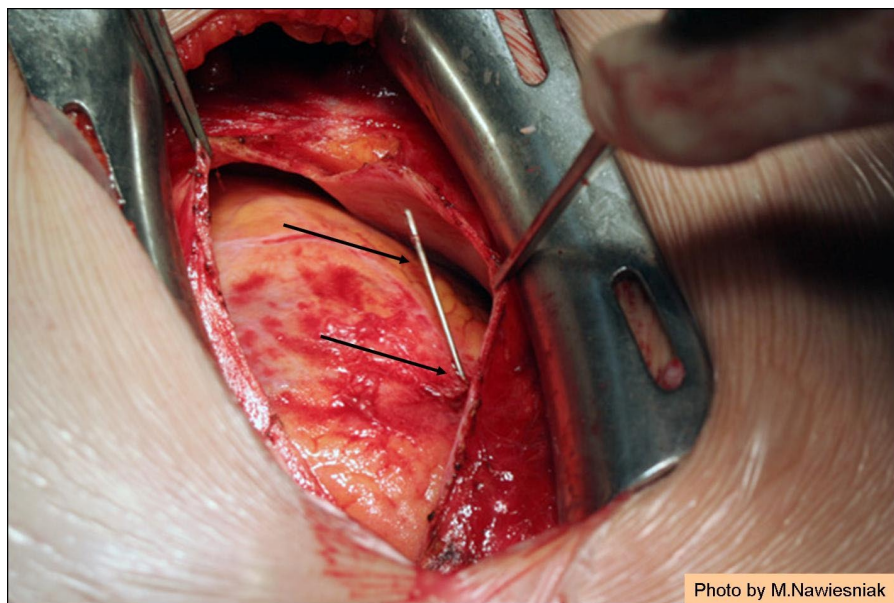


Figure 1
Intraoperatively view (arrows show the sewing needle stuck in the right ventricle).

Patient

A 26 years old patient suffered from schizophrenia, injured herself with a sewing needle. She was admitted to Department of Cardiovascular Surgery and Transplantology in Krakow as urgent case.

At the time of admission to hospital she was hemodynamically stable: CTK 110/60, HR 90/min. She was conscious but faltered, in difficult verbal communication. X ray chest shown the needle in the heart location. Patient did not presented clinical signs of heart tamponade and urgently echocardiography examination did not show heart tamponade as well.

Woman was transfer urgently to operative room. The typical sternotomy was necessary. The extracorporeal circulation was stand by. Intraoperatively about 100 ml blood was suctioned out from pericardium and the needle was successfully removed from the right ventricle. The small whole was closed using single Prolene suture (Figure 1).

The patient hemodynamically stable was discharge from our hospital after five days after successful surgical intervention. She was sent to Psychiatric hospital. For the sake of active suicidal tendencies required special supervision.

Corresponding Author:

Adres do korespondencji:

Piotr Wegrzyn M.D
e-mail: peter-wegrzyn@o2.pl
Department of Cardiovascular Surgery
and Transplantology Jagiellonian University
John Paul II Hospital in Krakow
31-202 Krakow, Pradnicka Street 80
Phone: 0048 12 614 30 75, Fax: 001248 423 39 00
<http://www.szpitaljp2.krakow.pl/eng/index.php>